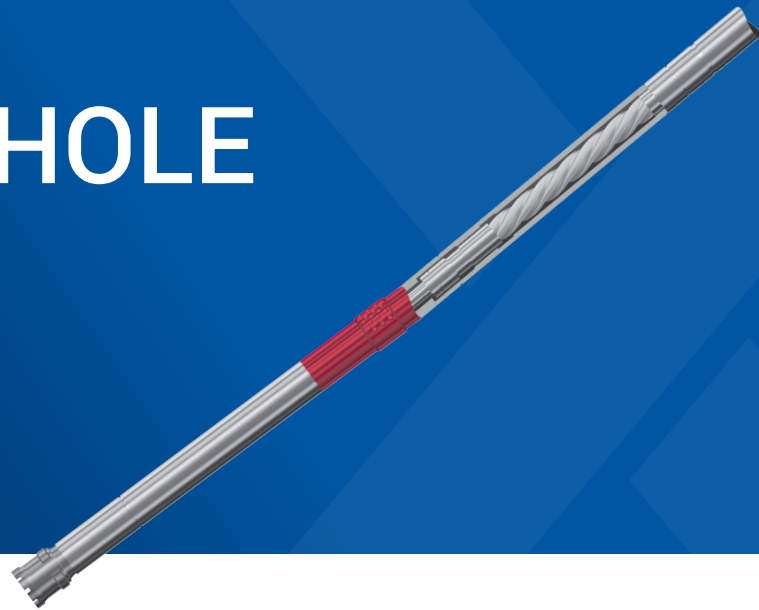


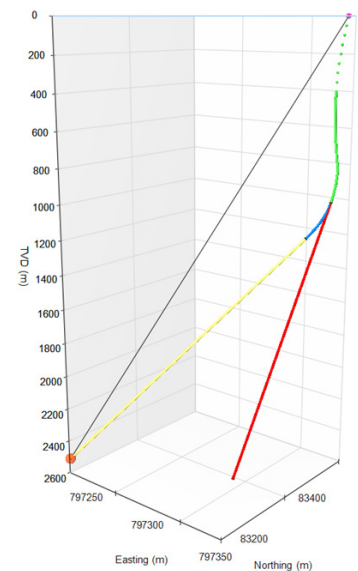
# REFLEX DOWNHOLE MOTORS™

Minimise your maintenance costs.



The customised REFLEX DOWNHOLE MOTORS™ developed by REFLEX provide the option to make alterations to the drill direction during drilling. Where there is a need for directional change, deflection settings can be adjusted simply and quickly by the drill operator to ensure intersection of the target. The robust nature of the motor ensures uninterrupted availability during drilling.

REFLEX DOWNHOLE MOTORS™ combine an adjustable bent housing with a specially developed mud lubricated friction bearing pack. The adjustable bent housing enables the operator to adjust deflection settings onsite without the time consuming need to change bent subs, and the mud lubricated friction bearing makes the instrument cheaper to operate, faster to service and able to withstand the high-speed rotation required to drill hard rock.



## Increased Intersecting

Increase the probability of intersecting your drilling target with the REFLEX EZ-NAV™ directional drilling software. The software compliments the REFLEX DOWNHOLE MOTORS™, allowing remote visibility of the drillhole and support anywhere, anytime.

## Minimise Maintenance Needs

The inclusion of a specifically developed mud lubricated friction bearing pack makes the motor cheaper to operate, faster to service while significantly enhancing its robustness.

## Keep Costs Down

The rugged and simple motor has been developed for ease of use and to withstand the extreme environment reducing replacement and repair costs.

## TECHNICAL SPECIFICATIONS NX 2 3/8" 1-2,7 STAGE

### MAX FLOW

189.25L / Minute  
(operating range 113.55 – 189.25L / Minute)

### MAX PUMP PRESSURE

1500psi

### MAX DIFFERENTIAL

800psi

### HORSEPOWER

19.5 at 189.27L / Minute

### TORQUE AT 50 GPM

11.8M / KG

### MAX. RPM

1300

### CONNECTION TOP/BOTTOM

BW

### MAX RECOMMENDED WOB

2272.7KG

### RECOMMENDED PUMP SIZE

1500psi 227L / Minute

## Key Features

- Adjustable bent housing (0-2 or 0-1 degrees) – choose from a variety of settings to suit your required build rate
- Multiple targets can be drilled without the expense of drilling the initial section of the borehole
- More robust and durable – impact resistant tungsten impregnated load bearings
- High speed Nitrile power bits sections more suited to diamond impregnated bits
- NX 2 3/8" 1-2, 7 stages
- HX 2 7/8" 1-2, 5.2 stages
- Cheaper to operate & faster to service – low maintenance mud lubricated bearing assembly
- Full training and support.

## Further Information

For more information please go to our website [www.reflexnow.com](http://www.reflexnow.com) or contact your nearest REFLEX office.

### AUSTRALIA

Perth (Head Office)

T +61 8 9445 4020

Brisbane

T +61 7 3723 3633

### EUROPE

United Kingdom

T +44 1273 405 975

### AFRICA

South Africa

T +27 11 908 5595

Ghana

T +233 544 305 033

### MIDDLE EAST

United Arab Emirates (UAE)

T +971 4 449 6800

### SOUTH AMERICA

Argentina

T +54 (9) 261 573 2222

Brazil

T +55 31 3317 1398

Chile

T +56 2 2589 9300

Peru

T +51 1 322 8850

### NORTH AMERICA

Timmins, Canada

T +1 705 235 2169

Vancouver, Canada

T +1 604 681 6765

Mexico

T +52 662 215 4317