

ioGAS™

New Features

SOFTWARE 7.1

IMDEXHUB-IQ™ ENABLED



Table of Contents

Table of Contents	2
What's New in ioGAS™ 7.1	4
Wavelet tessellation	4
Structure ribbon	5
Attribute manager	6
Display Labels	7
Scatterbox plot (XY plot with box plot sidebars)	7
Attribute bar chart	8
Favourite tools list	8
OSNACA reference rocks	9
Reflex Vanta VMR (40) XRF data detection limits	9
Interoperability	9
Improvements:	10
Installation	10
User interface	10
Column properties	10
Aliasing	10
Projection	10
Select variables	10
Calculations	10
Discriminant projection analysis	11
Principal components analysis	11
Self organising maps	11
Clustering	11
XY plots	11
Scatter plot matrix	11
QQ plots	11
Split probability plot	11
Box plots	11
Mineral and Rock Nodes	11
Regression lines	11
Variable maps	12
RGB images	12
Stereonet	12

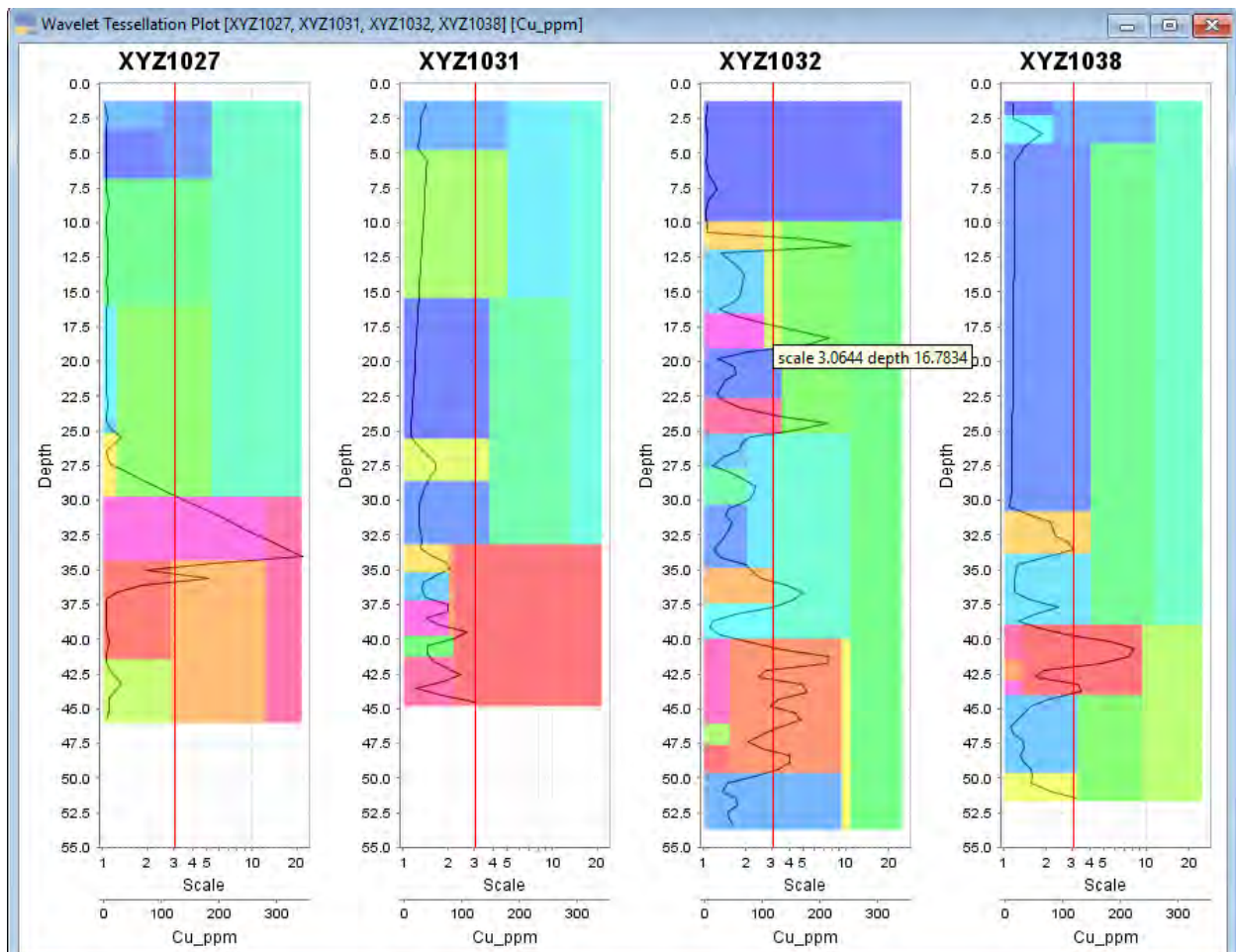
Diagrams	12
Warning and error messages	12

What's New in ioGAS™ 7.1

New features in this release include:

Wavelet tessellation

Wavelet Tessellation is two analytical approaches to processing complex signals integrated together into one workflow. A wavelet transform is a process of performing multi-scale edge detection on a signal such as gamma or geochemical variable, while the wavelet tessellation turns the signal into an interpretable pattern that can be related to the geology.



Structure ribbon



Alpha/beta/gamma Tool

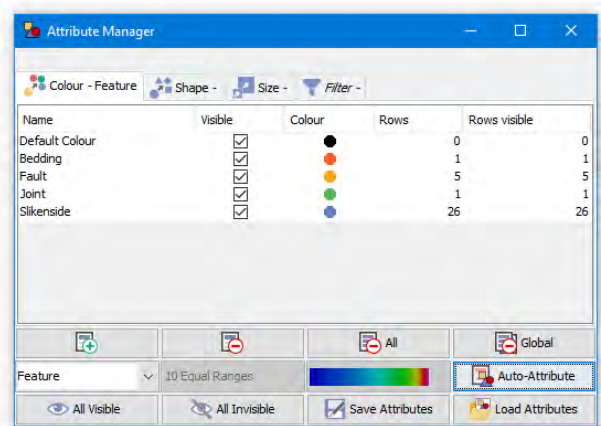
Convert alpha/beta/gamma structural data to dip/direction or plunge/trend values for use in ioGAS™ structural tools.

Configure structural data properties

New structure properties tool for setting dip, azimuth and structural feature information along with other options relating to orientation convention, stereonet projection and display of planar data.

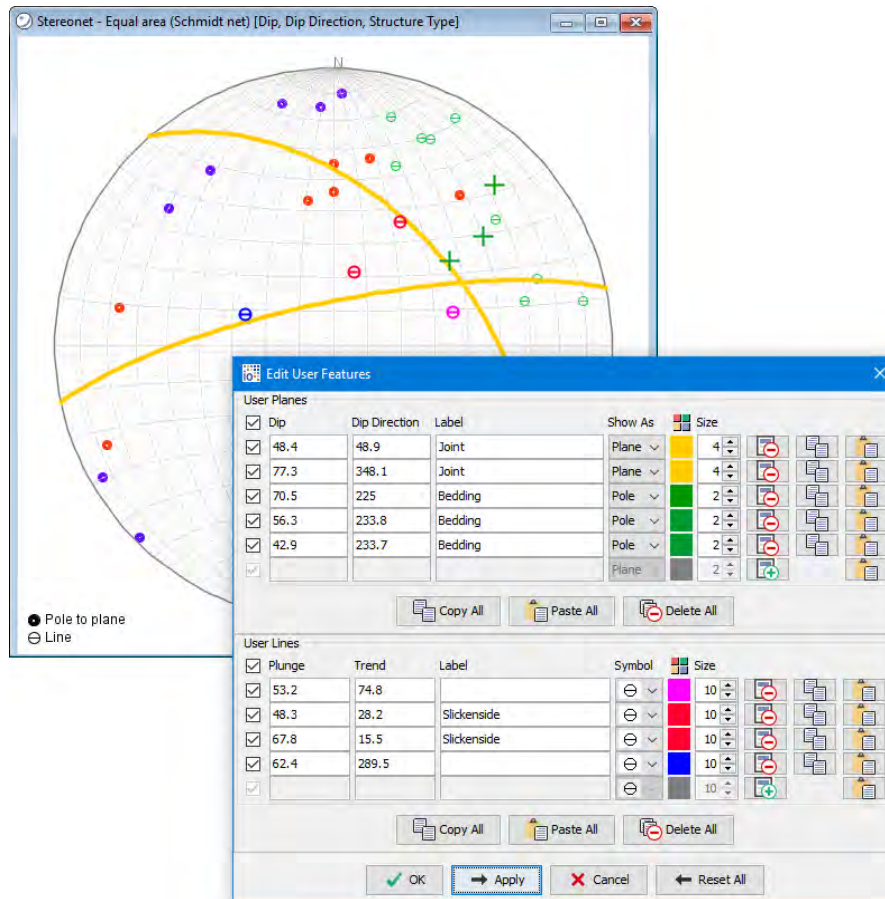
Rose Plot

Circular histogram used to display directional structural data and the frequency of each structure type.



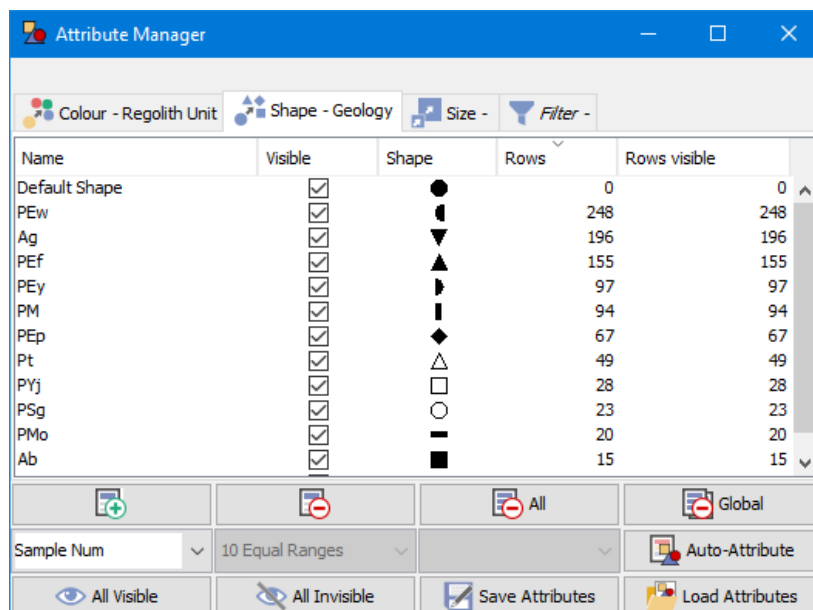
New Stereonet Tools

Plot drillholes and user lines directly onto stereonet. Enhanced user line and plane editing options: line symbol, size, plane colour, thickness and visibility controls.



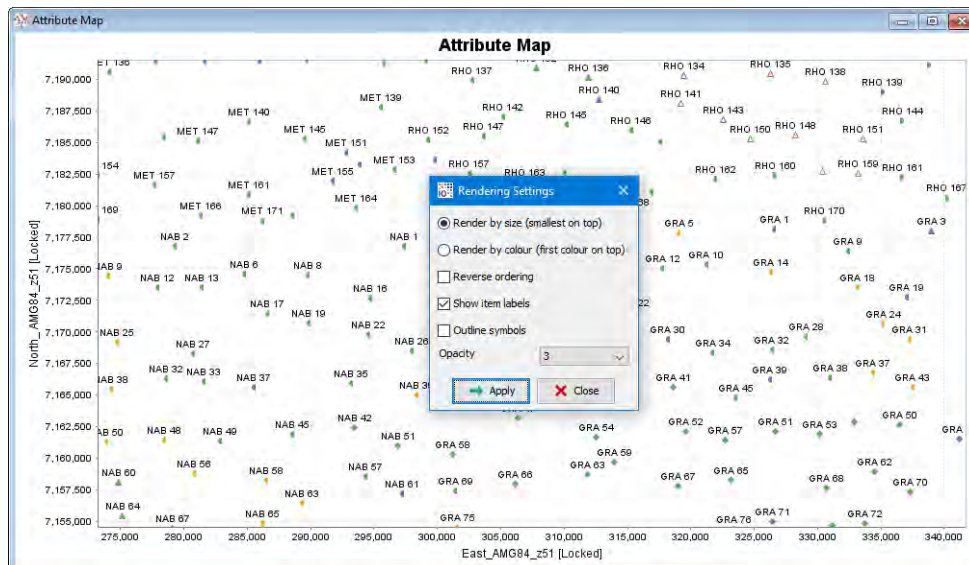
Attribute manager

- sort name, rows, rows visible and size columns
- multi-select to merge and reorder multiple attribute groups
- turn multiple group visibility on/off



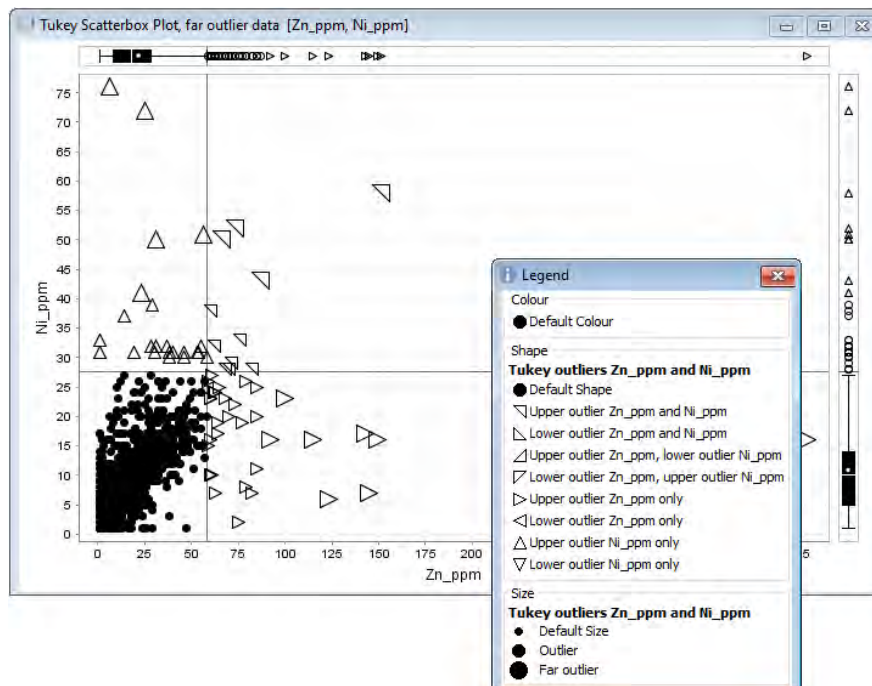
Display Labels

Label data points in selected plot windows using unique sample identifier or other variable from dataset.



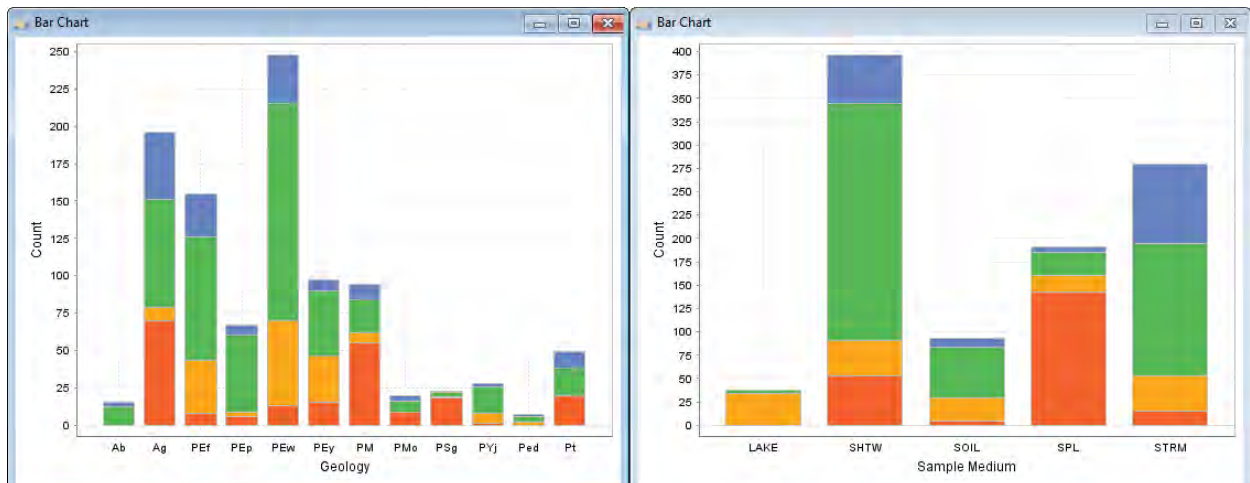
Scatterbox plot (XY plot with box plot sidebars)

A scatterbox plot combines an XY plot with box plots of the X and Y axis variables. Samples are classified according to the box plot outlier status for each of the selected variables and attributed using unique symbology.



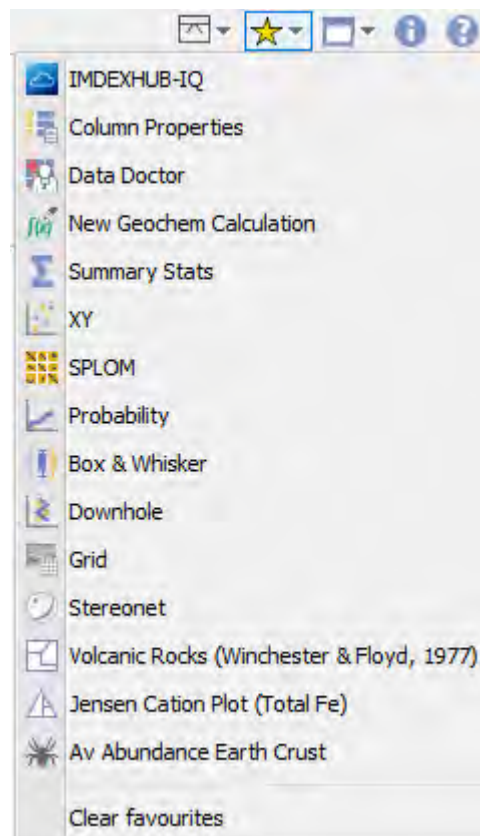
Attribute bar chart

Create a bar chart of the colour, shape or size groups as set in the Attribute Manager.



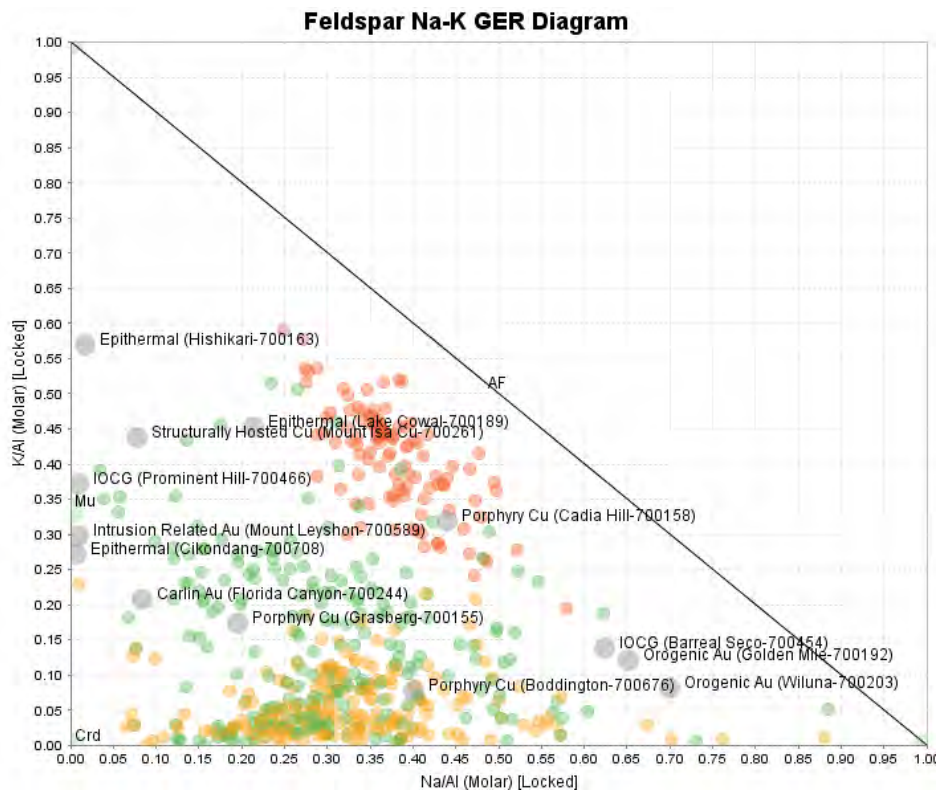
Favourite tools list

Create a menu of frequently used ioGAS™ tools and access it at all times from the Quick Access Toolbar.



OSNACA reference rocks

The Rock and Mineral Composition tool contains a new tab for OSNACA (Ore Samples Normalised to Average Crustal Abundance) samples collected from 25 deposit types.



Reflex Vanta VMR (40) XRF data detection limits

Interoperability

aiSIRIS

Mineral results and data from AusSpec's aiSIRIS system can now be viewed in ioGAS™. Export aiSIRIS results in .gas format from aiSIRIS Desktop and then import these directly into ioGAS™. There are now templates and diagrams in ioGAS™ for plotting and classification of the aiSIRIS mineral data. Please contact AusSpec for more information (www.ausspec.com).

QGIS plugin

Plugin for QGIS to import ioGAS™ files (.gas) and display the data as a symbolised point layer in an QGIS map.

Micromine

Export data from Micromine as ioGAS™ file (.gas) and view in ioGAS™.

Minalyze

Export data from Minalyze as ioGAS™ file (.gas) and view in ioGAS™.

Improvements:

Installation

- access ioGAS™ from IMDEX folder in Microsoft Windows Start menu

User interface

- show/hide ribbon option on quick access toolbar
- RGB Zonation tool added to Map ribbon
- save band next to Open band in File ribbon
- minimise All and Restore All open plot windows
- use Enter key for OK, Apply, Yes in selected dialogs
- browse to Logs button on Help ribbon
- select Labels tool added to Data ribbon
- CLR added to Transformation menu in Calculation ribbon

Column properties

- display dialog without closing all open windows

Aliasing

- B_pct, Li_pct, B2O3, Li2O, Cs2O, Ta2O5, Nb2O5, Rb2O, SnO2

Projection

- ETRS89/ETRS-TM35FIN (EPSG 3067)

Select variables

- sort variables alphabetically using right click
- Mo, Ni added to Chalcophile
- Sc, Ti added to Immobiles

Calculations

- use selected variables as input columns

Discriminant projection analysis

- set variable importance plot report limit

Principal components analysis

- first eigenvector element always set to positive
- save PCA report in gas file

Self organising maps

- SOM weights with zero samples not assigned to cluster group
- separate toolbar buttons for show/hide SOM, SOM colouring options and show/hide legend
- save and restore SOM weight maps in gas file

Clustering

- create K-means clusters for single variable
- right-mouse copy button on SS and Delta plot window

XY plots

- display mean cross sized by 1 or 2 standard deviations
- display 5, 10, 20% guidelines with X=Y line

Scatter plot matrix

- report regression line slope and intercept
- show copyable report of visible statistics

QQ plots

- separate X=Y and regression toolbar buttons

Split probability plot

- add context menu options to summary mode tool

Box plots

- notched box display

Mineral and Rock Nodes

- LOI value for Carnotite

Regression lines

- display regression mode in plot title

Variable maps

- added rendering settings

RGB images

- use individual percentage cut-offs for each channel

Stereonet

- standardised names for planes and lines
- display legend for poles, lines and point density calculation type
- settings check box to display confidence circles with mean crosses
- low confidence mean status warning and reporting
- set visibility, colour and thickness for user planes
- delete all entries in user planes dialog
- display planes (great circles), poles or both
- generate point density grid on plane or line data
- updated stereonet demo data file
- deselect user plane/line tool using Esc key

Diagrams

- restore all option when opening multiple diagrams from gas file/checkpoint/template
- display/edit ternary nodes using A,B,C values

Warning and error messages

- split into two interfaces on status bar



This release of ioGAS™ changes the way some settings are stored. Some settings, including recent file lists and selected mineral nodes will be reset.