

IMDEX ioGAS™

New Features

SOFTWARE 7.4

IMDEXHUB-IQ ENABLED

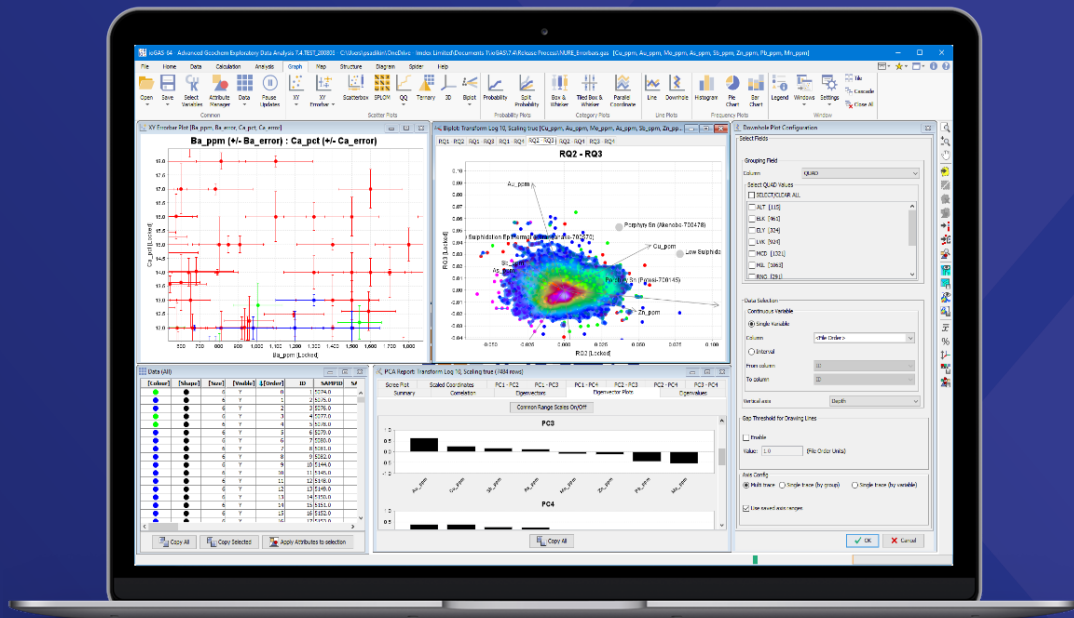


Table of Contents


Table of Contents	2
What's New in ioGAS 7.4	3
Batch Open	3
SQLite Import	4
Edit Data	4
Merge Columns	5
User Selected Variable Groups	5
Scatterplot Error Bars	6
PCA Report Eigenvector Plots	7
Other Improvements	8

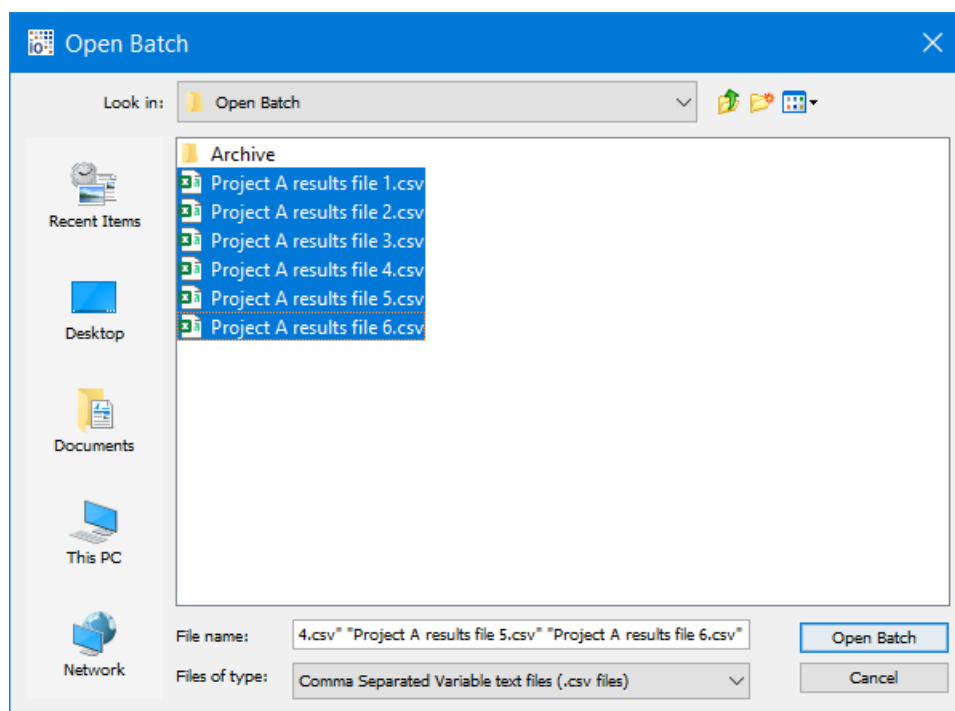
What's New in ioGAS 7.4

The following is a summary of the new features and improvements in this version of ioGAS.

This release of ioGAS changes the way some settings are stored. If custom entries have been added to any of the following user config files: binning.3.xml, geotiff.epsg.LL.3.txt reapply these changes to new files binning.4.xml and geotiff.epsg.LL.4.txt.

Batch Open

Import multiple files with the same structure and combine them into a single dataset. Select  **Open Batch** on the **Open** menu from any ribbon.




In order for the files to be combined successfully the following conditions must be met:

- csv or txt file format only
- batch files located in single folder
- files contain same number of columns
- files contain same column order


The selected files are organised into alphanumeric order based on filename and the first file in this list is used as the batch import template in terms of number of columns, column order and column names.

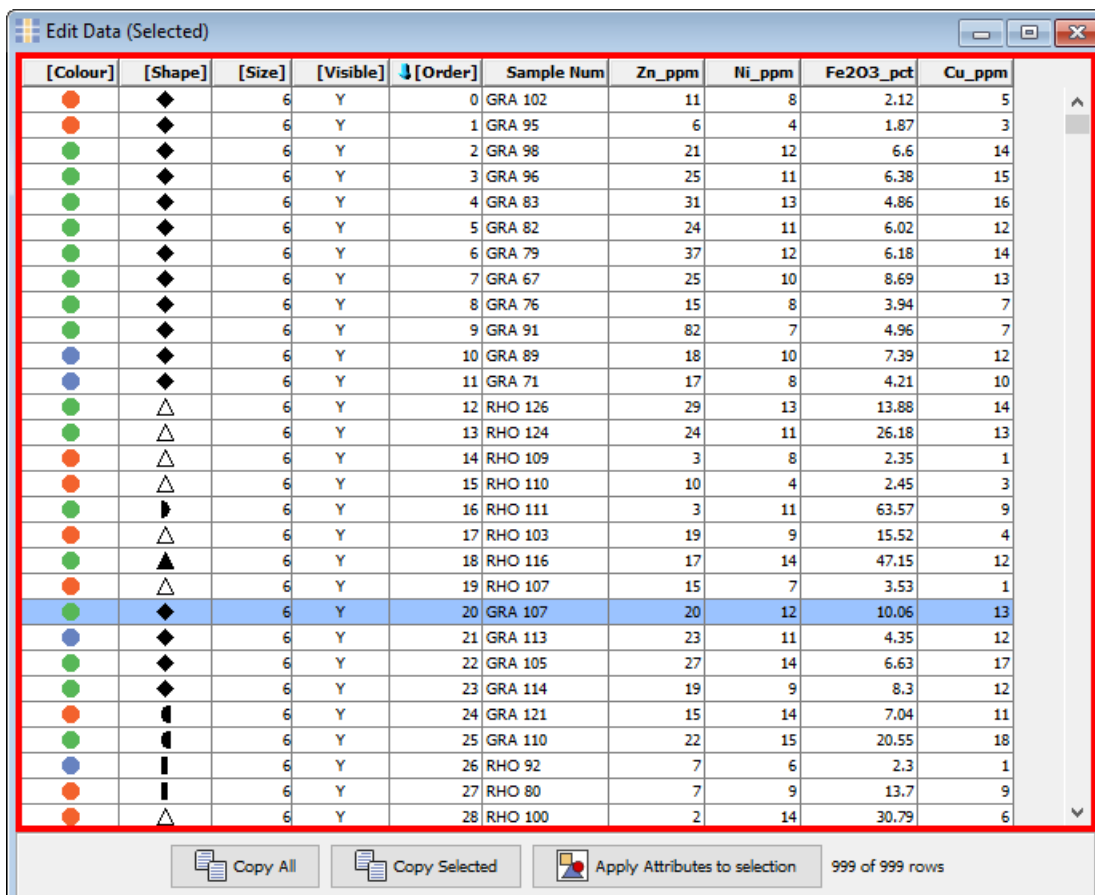
If any of the other selected files has a different number of columns a warning message is displayed listing the name of the files that do not match the template file and the import will not proceed.

SQLite Import

Open a table or view from an SQLite database using the  **SQLite** tool on the File ribbon or **Open>Open Database>SQLite** from any other ribbon.

Edit Data

Make changes to data by directly editing cell values using the  **Toggle Edit Mode** tool from the Data View toolbar. A red border is displayed within the Edit Data window to indicate the edit mode is activated.




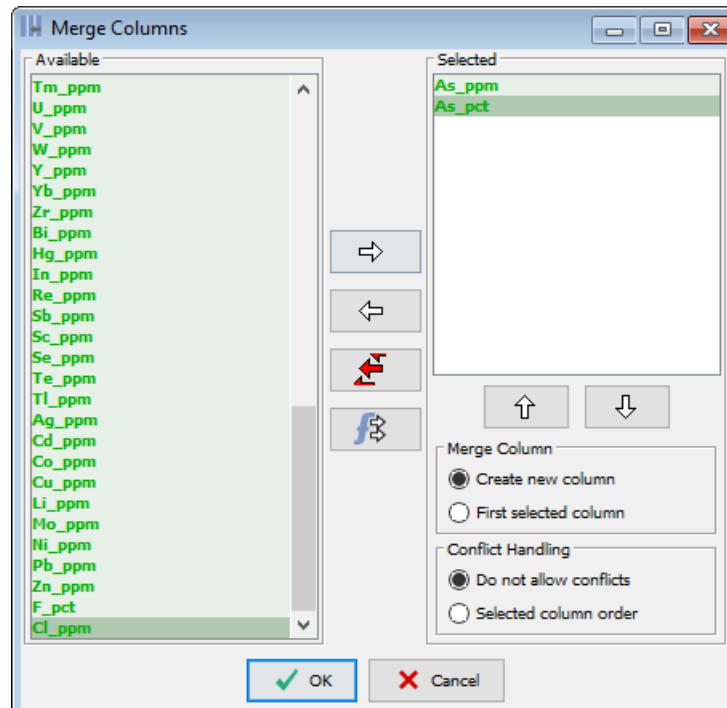
[Colour]	[Shape]	[Size]	[Visible]	[Order]	Sample Num	Zn_ppm	Ni_ppm	Fe2O3_pct	Cu_ppm
●	◆	6	Y	0	GRA 102	11	8	2.12	5
●	◆	6	Y	1	GRA 95	6	4	1.87	3
●	◆	6	Y	2	GRA 98	21	12	6.6	14
●	◆	6	Y	3	GRA 96	25	11	6.38	15
●	◆	6	Y	4	GRA 83	31	13	4.86	16
●	◆	6	Y	5	GRA 82	24	11	6.02	12
●	◆	6	Y	6	GRA 79	37	12	6.18	14
●	◆	6	Y	7	GRA 67	25	10	8.69	13
●	◆	6	Y	8	GRA 76	15	8	3.94	7
●	◆	6	Y	9	GRA 91	82	7	4.96	7
●	◆	6	Y	10	GRA 89	18	10	7.39	12
●	◆	6	Y	11	GRA 71	17	8	4.21	10
●	△	6	Y	12	RHO 126	29	13	13.88	14
●	△	6	Y	13	RHO 124	24	11	26.18	13
●	△	6	Y	14	RHO 109	3	8	2.35	1
●	△	6	Y	15	RHO 110	10	4	2.45	3
●	▮	6	Y	16	RHO 111	3	11	63.57	9
●	△	6	Y	17	RHO 103	19	9	15.52	4
●	▲	6	Y	18	RHO 116	17	14	47.15	12
●	△	6	Y	19	RHO 107	15	7	3.53	1
●	◆	6	Y	20	GRA 107	20	12	10.06	13
●	◆	6	Y	21	GRA 113	23	11	4.35	12
●	◆	6	Y	22	GRA 105	27	14	6.63	17
●	◆	6	Y	23	GRA 114	19	9	8.3	12
●	▮	6	Y	24	GRA 121	15	14	7.04	11
●	▮	6	Y	25	GRA 110	22	15	20.55	18
●	▮	6	Y	26	RHO 92	7	6	2.3	1
●	▮	6	Y	27	RHO 80	7	9	13.7	9
●	△	6	Y	28	RHO 100	2	14	30.79	6

999 of 999 rows

Double-click in a cell to make it editable and replace the existing contents with a new value. Data edits cannot be undone and will affect any checkpoints that have already been saved. It is recommended the file is saved prior to editing.

Merge Columns

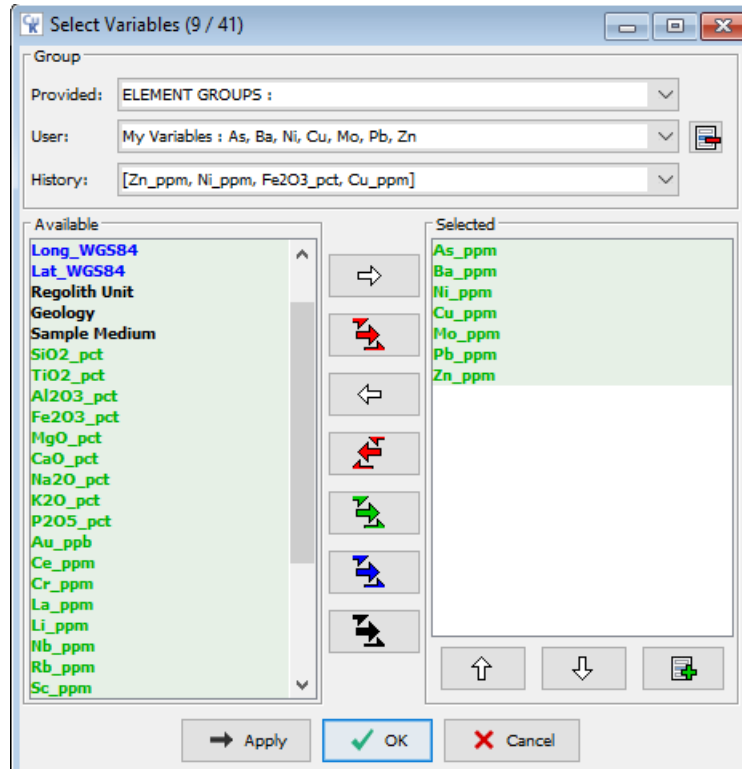
Use the  **Merge Columns** tool on the Data ribbon to merge data from two or more selected columns into a new or existing column. If the selected columns to merge are "aliased" then the data values merged data can be converted to the same element/oxide/unit format as the first selected column.




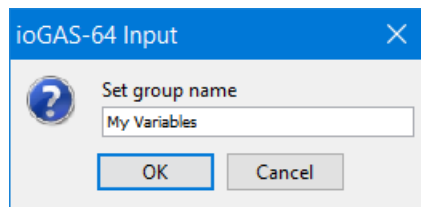
If no conflicts are allowed then as soon as a row with two or more valid entries in the selected columns is encountered the merge process is cancelled. If using the Selected column order option then the merged value for a row is taken from the first column in the Selected window that contains a valid entry.

User Selected Variable Groups

Users can create and save their own variable groups and access them within the same session or between ioGAS sessions.



To create a user group add the desired aliased variables to the **Selected** window. Click on the  button to save the selected aliased variables to a new user group. Enter a group name and click **OK**.



One or more user groups can be added to the **Selected** window using the **User** drop-down list. Once selected, individual variables can be added or removed as required.

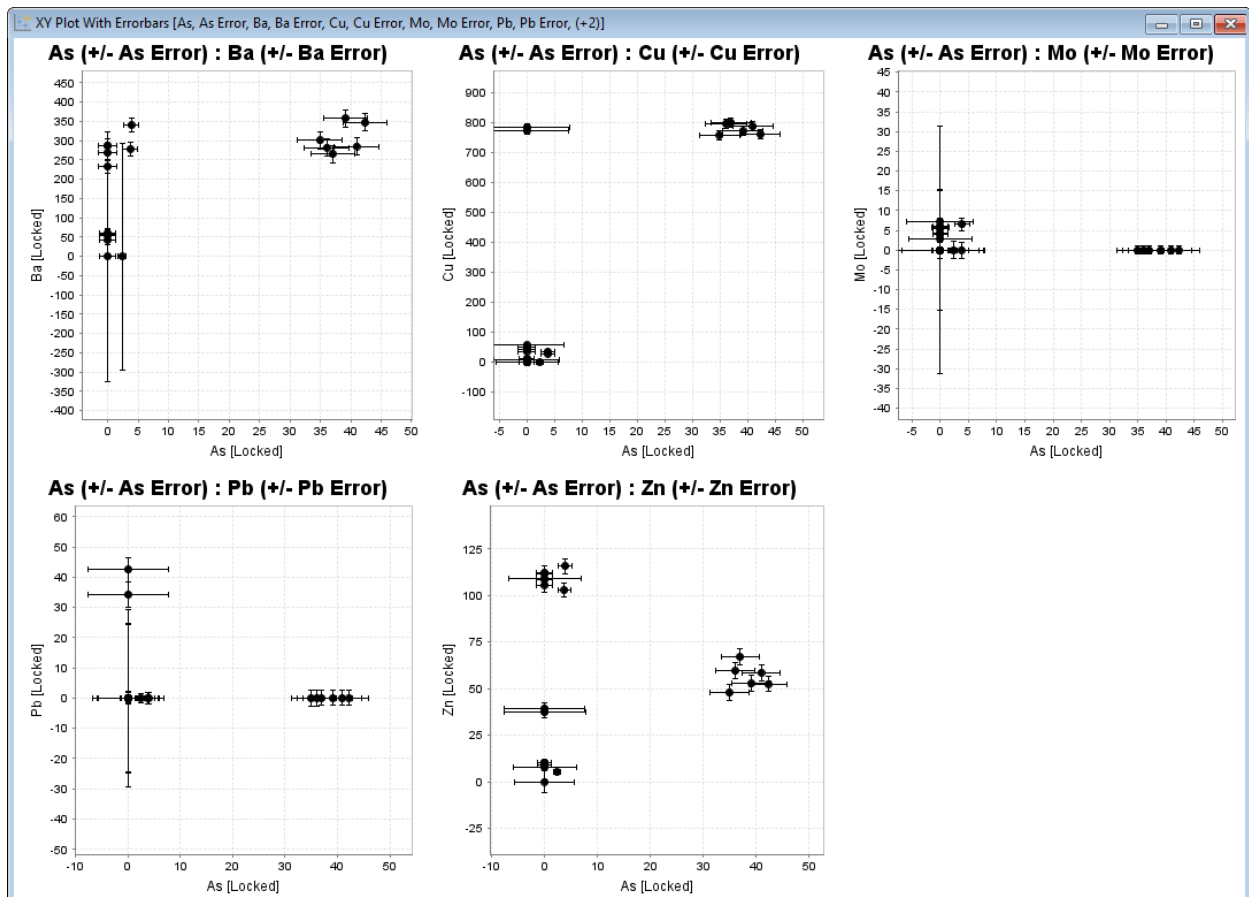
User groups can only be selected if the variables in the dataset are aliased in the Column Properties dialog.

To remove a user group make sure it is visible in the user window and click on the  button.

Scatterplot Error Bars

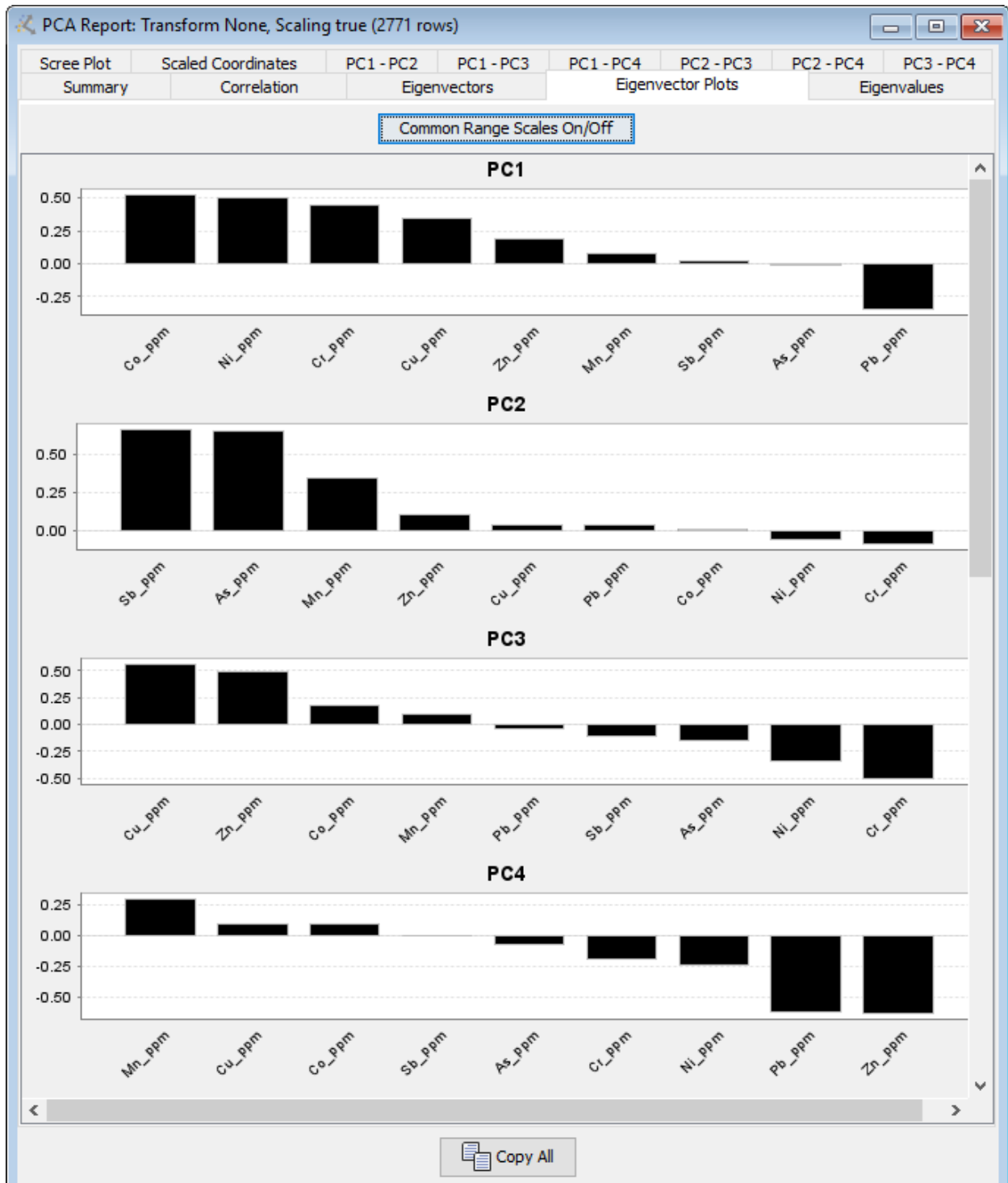
Located on the graph ribbon under  **XY Errorbar** with XY, YX and pairwise plot options available.

XY Plots with Errorbars are graphical representations of error or uncertainty for a data point. Errorbars are drawn outwards (increasing and decreasing) from a data point, and the lengths are based on user-defined variables in the file for a particular numeric variable. An error bar variable must consist of positive numeric values in all rows. To display an XY Errorbar plot at least four variables must be selected in the Select Variables dialog in the following order: variable 1, variable 1 error, variable 2, variable 2 error, etc.



PCA Report Eigenvector Plots

Display eigenvectors values for each principal component graphically in order from highest to lowest. Place the cursor over a bar to view the eigenvector value in a tooltip.



Tabulated eigenvector values can also be sorted in the Eigenvectors tab by clicking on the PC column header cell.

Other Improvements

User interface

- standardise downhole, line, glinking, recurrence and wavelet configuration dialogs

Demo data

- example aiSIRIS data file

General settings

- default option to display all points with black outline in new plot windows

Aliasing

- CeO₂, Pr₆O₁₁ and Tb₄O₇ added to Alias list
- Cs_pct, Ga_pct, Ge_pct, Hf_pct, I_pct added to alias list

Select variables

- S, Te, As and Mn added to Porphyry Cu element list

Ternary plot

- centred ternary plot coefficient report

Selection tool

- use Alt key to retain selection when rotating data in 3D or 3D Attribute Map window

Mineral and rock nodes

- Yilgarn rock compositions rocks tab
- OREAS623 added to OREAS (Pb-Zn) rocks tab
- MgHornblende and FeHornblende added to Amphibole minerals tab

Calculation

- report total rows and number of multivariate rows with results

Quick calcs

- Sum quick calcs:
 - sum selected aliased variables (%)
 - sum selected aliased variables (oxide %)
 - recalculate selected aliased variables to 100%
- Transform quick calc:
 - invert sign - multiply each data value in column by -1

CrossTab

- improved performance when cross tabulation is open
- button to refresh CrossTab according to current Attribute Manager state

PCA

- sort eigenvector columns
- user defined principal component limit
- display point density grids on 2D biplot
- display mineral nodes on 2D biplot

Clustering

- display DPA plot with all transform options

Recurrence plot

- use alpha value to calculate quadrant scan threshold

Gridding

- view legend percentile bin and data value in status bar

Stereonet

- edit drillhole symbology

Copy

- SVG added to plot and legend window copy options

Export

- MapInfo TAB files in MGA2020 projection

Rendering settings

- display selected opacity relative to attribute manager colour transparency setting