

IMDEX ioGAS™

New Features v8.1



Table of Contents

Table of Contents	2
What's New in ioGAS 8.1	3
Workflow Recorder	3
Provided workflows	4
Save/load Mineral and Rock Node Selections	4
User mineral assemblages	5
Other node updates	6
General Performance Optimisations	6
Faster renering mode	6
acquireDirect Upgrades	7
Other Improvements	7
File	7
Aliasing	7
Tool search	8
Missings analysis	8
Selection tools	8
Installer	9
Data doctor	9
Stereonets	9

What's New in ioGAS 8.1

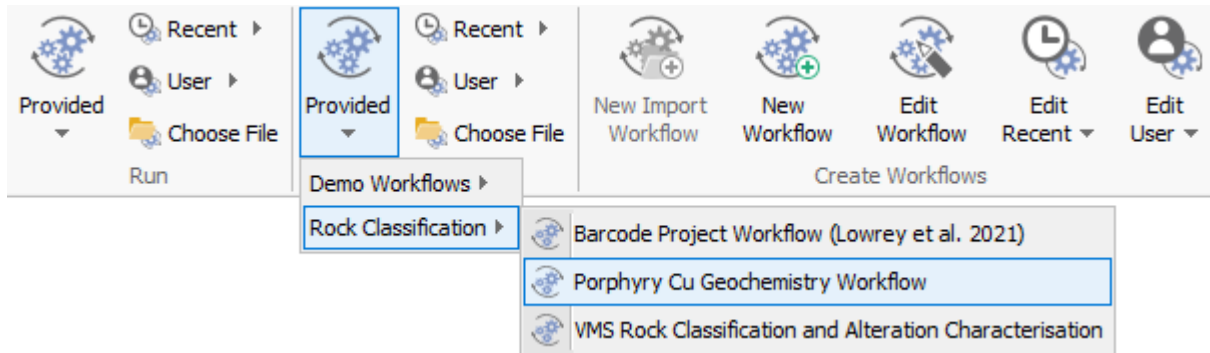
The following is a guide to the new features and improvements in this version of ioGAS.

Workflow Recorder

Updates to the workflow recorder introduced in ioGAS 8.0 to include support for:

- right-click plot menu options
- mineral and rock node settings
- EMF, EPS & SVG vector file export
- plot window style settings
- generate random subsample
- stereonet settings
- Mahalanobis distance-distance plots
- close file option after running import workflow
- recurrence plots
- version compatibility
- zoom to box
- prefix original file name to export file name
- selecting all aliased/text/numeric variables
- stereonet configuration settings
- alpha/beta/gamma configuration settings
- point density settings
- stereonet contour settings
- embedding user templates
- regression analysis
- modified calculation output column names
- variable importance plots
- drillhole selection options
- glinking
- provided workflows

Provided workflows



Library of workflows supplied with ioGAS. Provided workflows selected from the Run band are replayed automatically from start to finish. Provided workflows selected from the Playback band can be replayed by manually clicking each step.

Demo workflows are designed to be used with the ioGAS demonstration datasets.

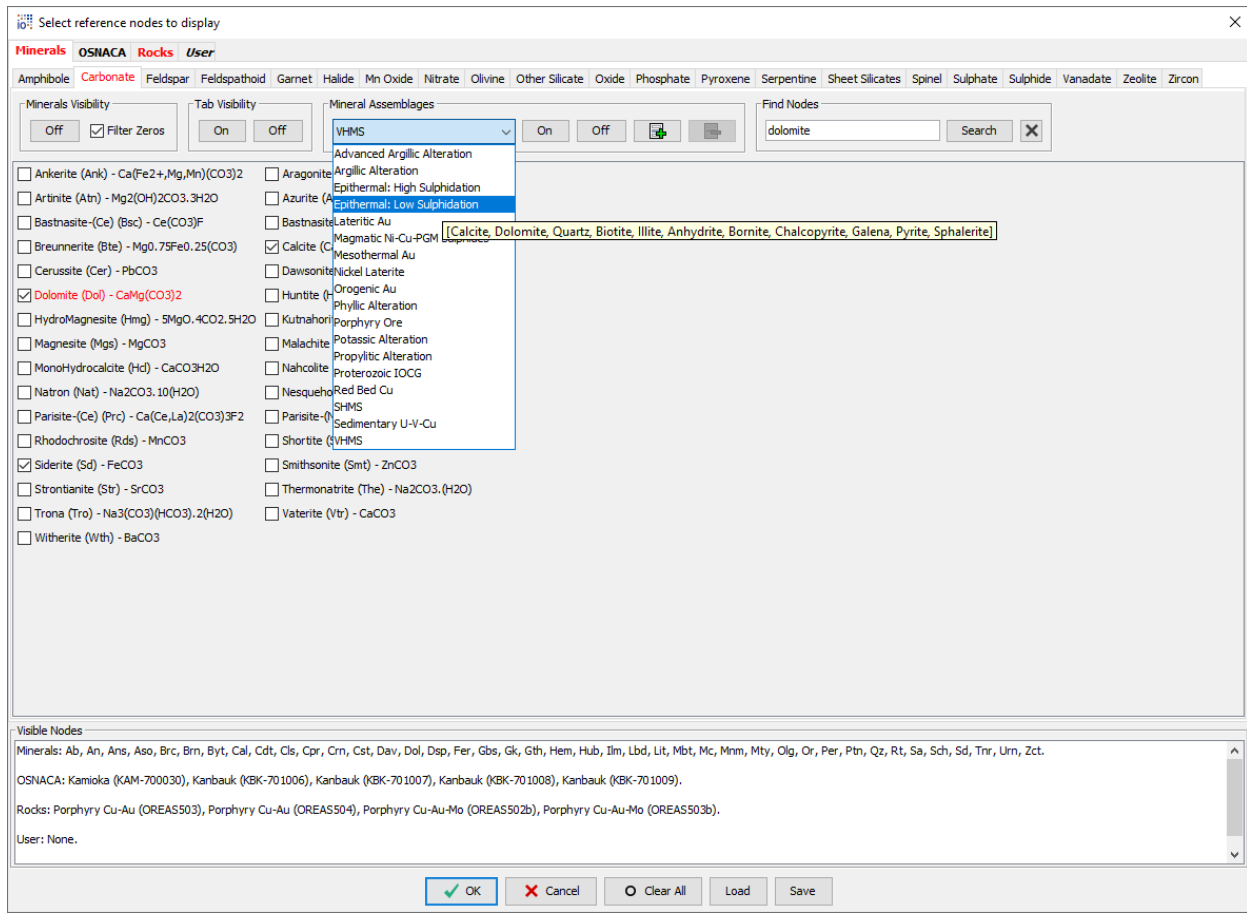
Save/load Mineral and Rock Node Selections

Redesigned mineral and rock node settings dialog to enable saving and loading of user node selections.

Create a standard suite of mineral, rock, OSNACA or user nodes for different prospect or project areas and re-use or share them between other users as required. Simply select the desired nodes and click **Save** to generate the XML file. To reload, select **Load** and browse to the saved XML file.


The default location for saved node XML files is one of the following:

- Windows installation **C:\Users\Username\AppData\Roaming\ioGAS\Nodes** folder
- Mac installation **Applications\ioGAS\Contents\Resources\app\Nodes** folder



User mineral assemblages

Users can also create their own mineral assemblages and add them to the existing mineral assemblage list.

1. Select the desired mineral nodes
2. Click the  button
3. Enter a name for the new mineral assemblage and click **OK**
4. To re-use, select the required assemblage from the list and click **On**

User mineral assemblages are saved to the mineral.assemblages.xml file in one of the following locations:

- Windows installation
C:\Users\Username\AppData\Roaming\ioGAS\userConfig folder
- Mac installation Applications\ioGAS\Contents\Resources\app\userConfig folder

The mineral.assemblages.xml file can be shared with other users by saving this file to one of the locations above.

Other node updates

- reset user node visibility to defaults
- Shift-key multiple node select
- undo/redo node selections
- clear current node selections
- Pyrochlore added to Oxides tab
- copy mineral node text
- replace OREAS22d with OREAS22h

General Performance Optimisations

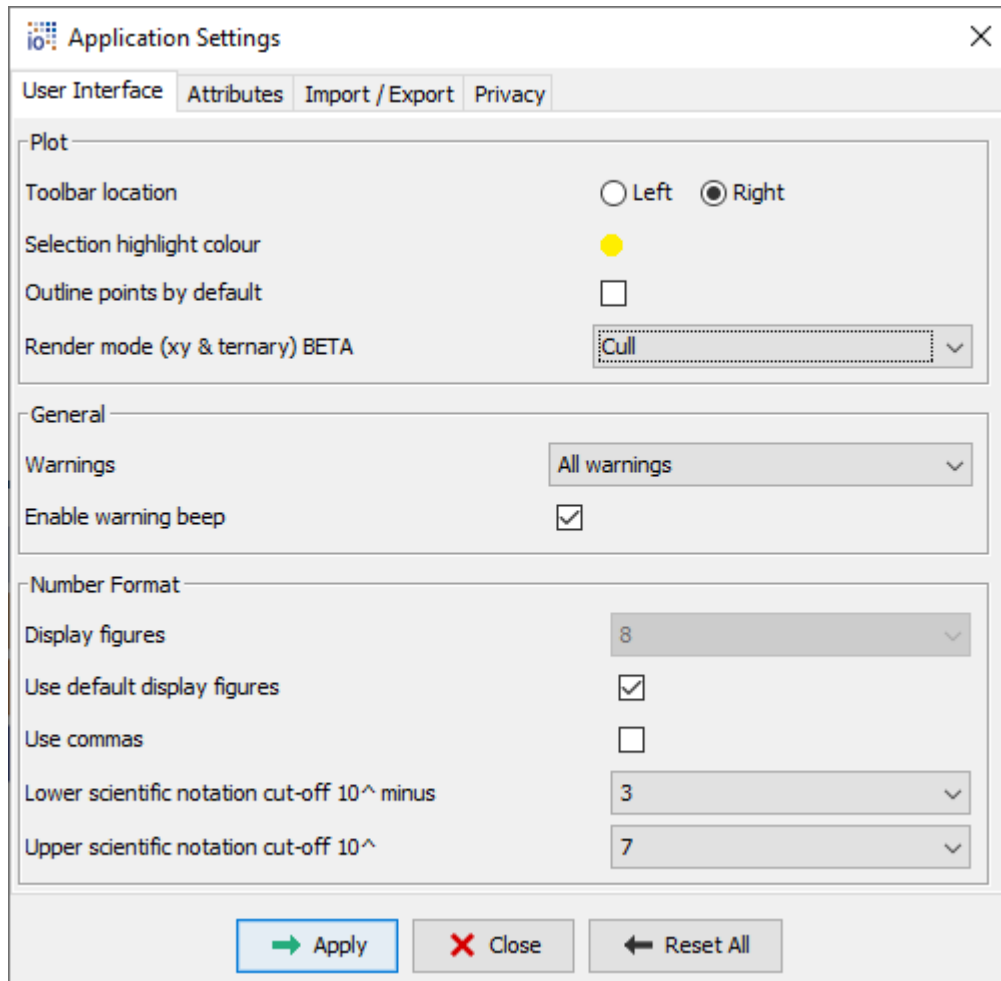
A variety of performance optimisations are being explored:

- faster rendering mode (BETA)
- faster variable map creation speed
- on-the-fly tooltip generation

Faster rendering mode

The faster rendering mode is currently only available in XY & Ternary plots and is designed to improve rendering speed with large datasets. At lower resolutions underlying points in a plot window are not rendered but as the data is zoomed more points are rendered. The percentage of rendered points at the current resolution is displayed in the status bar.

To turn the faster render mode on go to the Settings tool on the File ribbon and set the Render mode to **Cull**.



acQUIREDirect Upgrades

- updated acQUIRE Direct API v4.6.2.2
- updated acQUIREDirect installer
- uninstall acQUIREDirect when ioGAS is uninstalled

Other Improvements

File

- support commas within columns when importing and exporting csv files

Aliasing

- create user list of columns to ignore when aliasing data

1. Open the *aliasing.exceptions.txt* file located in one of the following locations:

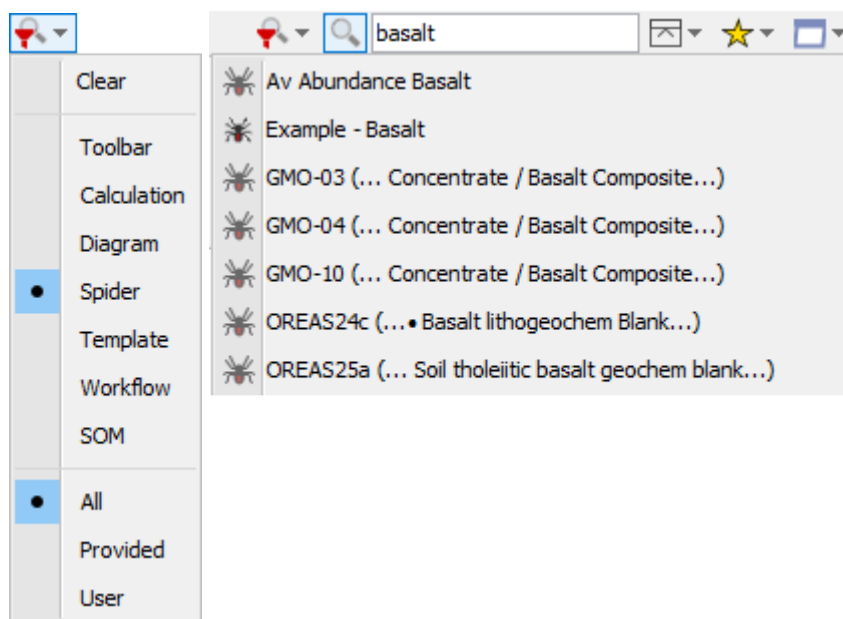
- Windows installation
**C:\Users\
Username\AppData\Roaming\ioGAS\userConfig** folder
(Username = your login)
- Mac installation
Applications\ ioGAS \Contents\Resources\app\userConfig
 folder

2. List the column names to exclude from the aliasing process. Enter each column name on a separate line.

3. Save the file

Tool search

- filter search results by tool, provided or user resources



Missings analysis

- replace selected variables with missing or present variables

Selection tools

- added to CrossTab and confusion matrix toolbars
- query select tool added to data ribbon

Installer

- run.sh file with 24Gb limits added to MacOS installer
- Windows 11 support

Data doctor

- ignore nulls checkbox added to dialog

Stereonets

- persist user configuration settings between sessions